

Eyelid Surgery

Surgery of the eyelids, blepharoplasty, is designed to improve the overall appearance of the upper and lower lids. Droopy eyelids can make patients look older and tired and it is the goal of blepharoplasty to correct this while maintaining good vision and ocular health.

In upper eyelid surgery or upper blepharoplasty the incision is made in a naturally occurring skin crease approximately 1.0 cm above the lash line. Excess skin, fat and muscle are removed while preserving normal eyelid function and the incision is subsequently closed with fine sutures minimizing the visibility of scarring.

In lower eyelid surgery the incision may be made in an inconspicuous site along the lash line or crease of the lower lid and in a similar fashion excess fat, muscle and skin are trimmed away before the incision is closed with fine sutures. In some instances if eyelid puffiness is caused primarily by excess fat and there is no need for skin resection this is treated by a tranconjunctival approach in which the incision is made within the lower eyelid.

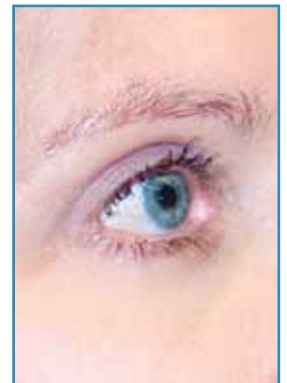
There are a variety of technologies available to perform blepharoplasty including scalpel incision, radiofrequency technology and the CO₂ laser. Radiofrequency technology and CO₂ laser technology provides for a dry bloodless field with decreased postoperative bruising and an earlier return to function. However both techniques can result in the skin incision taking longer to heal with a longer period of maturation for the scar. In many instances if there is considerable ptosis or droop of the upper brow or droop of the lower one third of the face, a coincidental endoscopic forehead lift or endoscopic facelift may also be considered to improve the overall facial appearance. As with all cosmetic procedures there is a limit to the amount of skin and muscle that can be removed from the upper or lower lid in order to maintain good function and prevent postoperative complications.

If you have significant pre-existing ophthalmologic problems please let Dr. Keohane know and he will arrange appropriate ophthalmologic consultation before considering elective cosmetic blepharoplasty. Similarly if you do have problems with dry eyes or wear contact lenses let him know, as these issues need to be addressed preoperatively.

BEFORE



AFTER



For more before and after examples of this procedure, visit our web site.

After Surgery

Immediately following surgery tiny bandages or steri-strips are applied below the lids, an ointment will be prescribed to prevent dryness of the eye and a certain degree of swelling and bruising is normal and expected. Cold ice compresses as well as elevation of the head will enhance healing and relieve discomfort.

Permanent sutures or stitches will be removed approximately five to seven days following surgery and most patients are able to resume normal activities in ten to fourteen days.